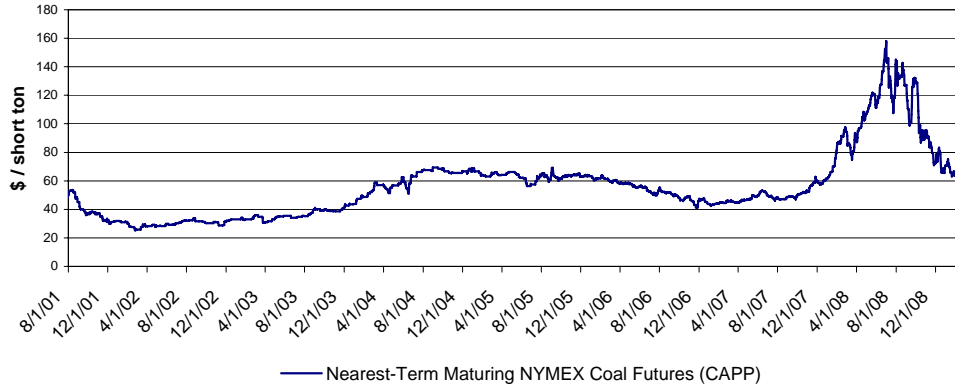


Coal Prices

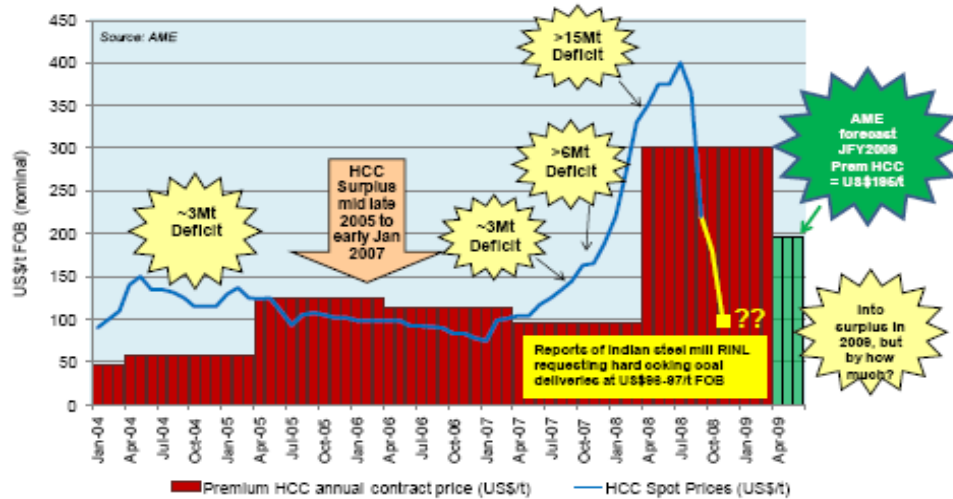
Below are Steam Coal Prices based on NYMEX contracts. Underlying commodity is Central Appalachian (CAPP) steam coal.

Steam Coal Prices



Below are Met Coal Contract Prices vs Met Coal Spot Prices, with commentary from AME Mineral Economics on drivers behind recent price movements

Figure 51: Hard Coking Coal Contract vs. Spot Prices: January 2004 to present



Below are contract met coal prices from 1968 to 2000, and 2000 to 2013, with 2008 to 2013 based on projections from AME Mineral Economics. HCC stands for Hard Coking Coal and SSCC stands for Semi-soft Coking Coal

Figure 55: Australia-Japan Long-Term Annual Benchmark Contract Met Coal Prices 1968–2000

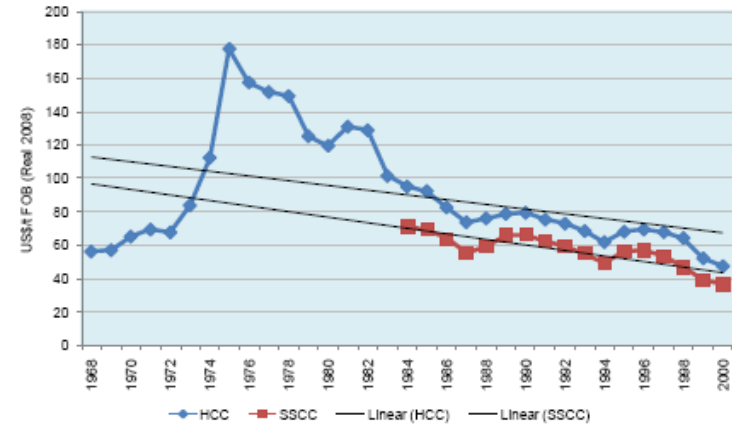
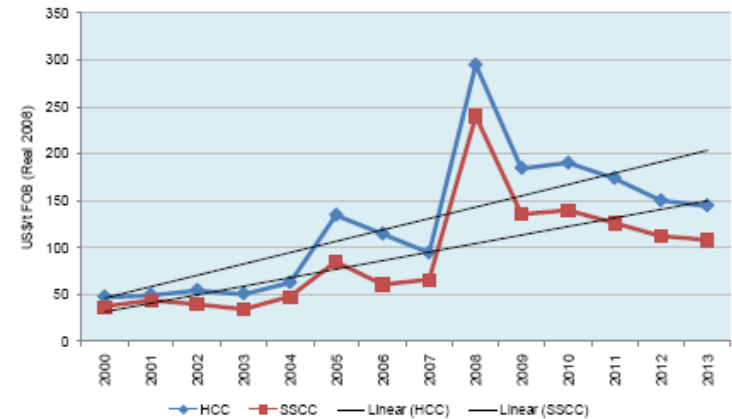


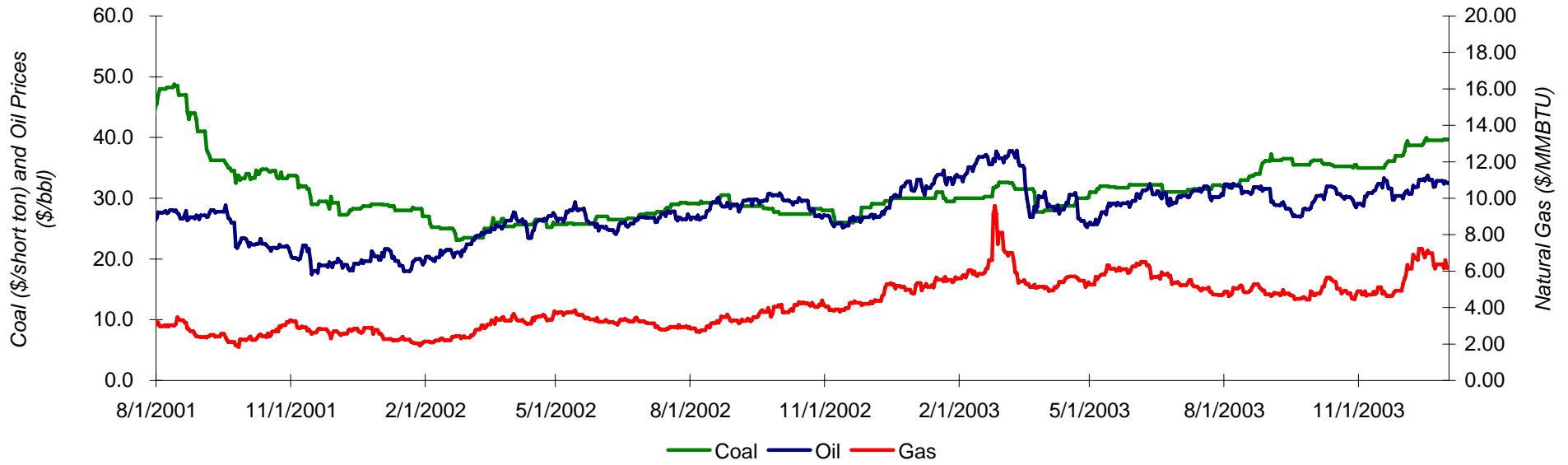
Figure 56: Australia-Japan Long-Term Annual Benchmark Contract Met Coal Prices 2000–13



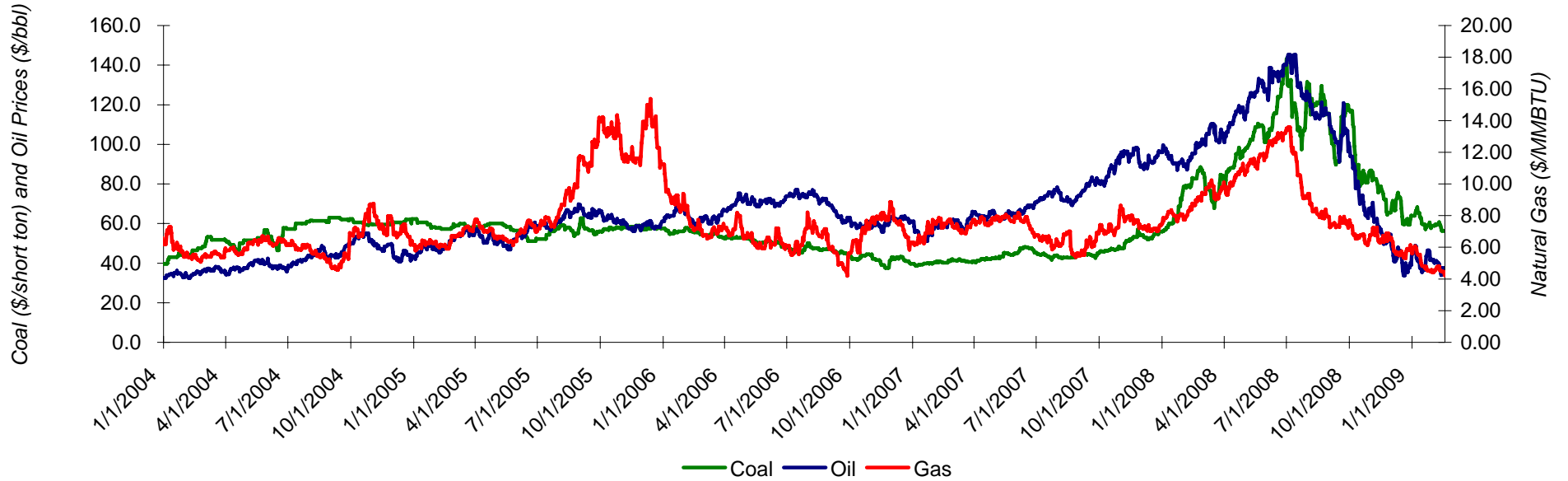
Source: AME Mineral Economics

Steam Coal vs Natural Gas vs Oil Prices

8/1/01 - 1/1/04



1/1/04 - Present



China Steel Production and Consumption

	<u>Crude Steel Production</u>			<u>Finished Steel Production</u>			<u>Net import (export)</u>			<u>Apparent consumption</u>			<u>Price</u>		
	kt	% YoY	% MoM	kt	% YoY	% MoM	kt	% YoY	% MoM	kt	% YoY	% MoM	Rmb/ton	% YoY	% MoM
2004	269,297	123%	na	319,800	37%	na	15,100	-50%	na	284,397	na	na	4,950	na	na
2005	348,058	29%	na	397,800	24%	na	5,290	-65%	na	353,348	24%	na	3,150	-36%	na
2006	421,456	21%	na	466,993	17%	na	(24,518)	-563%	na	396,938	12%	na	3,975	26%	na
2007	487,628	16%	na	560,078	20%	na	(45,821)	87%	na	441,808	11%	na	4,575	15%	na
2008	497,888	2%	na	579,007	3%	na	(43,830)	-4%	na	454,057	3%	na	3,725	-19%	na
YTD-2009													3,790	-20%	na
Jan-06	30,166	20%	-6%	32,466	24%	-4%	(233)	-154%	500%	29,934	17%	-6%	3,100	-38%	-2%
Feb-06	29,462	19%	-2%	31,822	25%	-2%	(600)	-710%	154%	28,862	16%	-4%	3,275	-36%	6%
Mar-06	32,889	19%	12%	38,004	24%	19%	(1,027)	-391%	67%	31,862	14%	10%	3,750	-30%	15%
Apr-06	33,711	20%	2%	38,311	30%	1%	(1,030)	-310%	1%	32,681	14%	3%	3,850	-27%	3%
May-06	35,934	21%	7%	40,233	29%	5%	(2,035)	NM	99%	33,899	14%	4%	3,850	-23%	0%
Jun-06	36,619	28%	2%	41,200	36%	2%	(2,758)	-962%	35%	33,860	17%	0%	3,950	-1%	3%
Jul-06	36,091	23%	-1%	38,660	23%	-6%	(2,047)	-503%	-26%	34,044	14%	1%	3,800	3%	-4%
Aug-06	36,700	21%	2%	38,965	17%	1%	(2,230)	-375%	9%	34,470	10%	1%	3,675	-3%	-3%
Sep-06	36,162	19%	-1%	40,076	24%	3%	(2,496)	-317%	12%	33,666	7%	-2%	3,825	8%	4%
Oct-06	37,684	19%	4%	41,594	26%	4%	(2,858)	-584%	15%	34,826	8%	3%	4,000	27%	5%
Nov-06	37,957	25%	1%	41,747	26%	0%	(3,156)	-674%	10%	34,801	12%	0%	3,925	21%	-2%
Dec-06	38,081	19%	0%	43,915	30%	5%	(4,048)	NM	28%	34,032	6%	-2%	3,975	26%	1%
Jan-07	38,119	26%	0%	40,440	25%	-8%	(2,899)	1108%	-28%	35,220	18%	3%	4,075	31%	3%
Feb-07	36,135	23%	-5%	38,568	21%	-5%	(3,156)	418%	9%	32,979	14%	-6%	4,160	27%	2%
Mar-07	40,157	22%	11%	46,955	24%	22%	(3,803)	274%	21%	36,354	14%	10%	4,225	13%	2%
Apr-07	40,318	20%	0%	46,270	21%	-1%	(5,528)	437%	45%	34,790	6%	-4%	4,070	6%	-4%
May-07	41,304	15%	2%	47,505	18%	3%	(4,790)	134%	-13%	36,514	8%	5%	3,950	3%	-3%
Jun-07	42,121	15%	2%	49,190	19%	4%	(4,944)	79%	3%	37,177	10%	2%	3,775	-4%	-4%
Jul-07	41,252	14%	-2%	47,726	23%	-3%	(4,545)	122%	-8%	36,707	8%	-1%	3,600	-5%	-5%
Aug-07	41,583	13%	1%	48,273	24%	1%	(3,915)	76%	-14%	37,668	9%	3%	4,115	12%	14%
Sep-07	42,712	18%	3%	48,593	21%	1%	(3,012)	21%	-23%	39,700	18%	5%	4,195	10%	2%
Oct-07	42,922	14%	0%	49,079	18%	1%	(3,029)	6%	1%	39,893	15%	0%	4,125	3%	-2%
Nov-07	39,691	5%	-8%	47,676	14%	-3%	(2,750)	-13%	-9%	36,941	6%	-7%	4,425	13%	7%
Dec-07	41,314	8%	4%	49,804	13%	4%	(3,449)	-15%	25%	37,865	11%	3%	4,575	15%	3%
Jan-08	40,564	6%	-2%	45,915	14%	-8%	(2,711)	-7%	-21%	37,853	7%	0%	4,725	16%	3%
Feb-08	38,884	8%	-4%	43,132	12%	-6%	(1,862)	-41%	-31%	37,022	12%	-2%	4,765	15%	1%
Mar-08	44,868	12%	15%	52,366	12%	21%	(2,650)	-30%	42%	42,218	16%	14%	5,250	24%	10%
Apr-08	44,676	11%	0%	51,613	12%	-1%	(3,270)	-41%	23%	41,406	19%	-2%	5,415	33%	3%
May-08	46,013	11%	3%	53,378	12%	3%	(4,222)	-12%	29%	41,791	14%	1%	5,675	44%	5%
Jun-08	46,944	11%	2%	53,873	10%	1%	(3,966)	-20%	-6%	42,979	16%	3%	5,890	56%	4%
Jul-08	44,890	9%	-4%	51,010	7%	-5%	(5,770)	27%	45%	39,120	7%	-9%	5,825	62%	-1%
Aug-08	42,570	2%	-5%	47,800	-1%	-6%	(6,350)	62%	10%	36,220	-4%	-7%	4,955	20%	-15%
Sep-08	39,600	-7%	-7%	45,900	-6%	-4%	(5,400)	79%	-15%	34,200	-14%	-6%	4,475	7%	-10%
Oct-08	35,900	-16%	-9%	42,900	-13%	-7%	(3,470)	15%	-36%	32,430	-19%	-5%	3,175	-23%	-29%
Nov-08	35,189	-11%	-2%	42,300	-11%	-1%	(1,920)	-30%	-45%	33,269	-10%	3%	3,385	-24%	7%
Dec-08	37,790	-9%	7%	48,820	-2%	15%	(2,240)	-35%	17%	35,550	-6%	7%	3,725	-19%	10%
Jan-09													3,835	-19%	3%
Current													3,790	-20%	-1%

Source: Morgan Stanley

Steel Consumption Projections

Below are steel production figures for past two years, and with analyst projections for 2009 and 2010

Table 5: Consumption expected to decline both in CY09E and CY10E (mn tonnes)

Regions	2006	2007	2008E	2009E	2010E
EU (27)	186.3	193.2	194.4	155.5	132.2
Other Europe	29.4	31.3	34.4	32.7	31.4
CIS	48.0	54.9	56.5	58.5	61.2
NAFTA	155.6	141.5	147.2	117.7	100.1
Central and South America	36.5	41.6	44.1	45.6	47.7
Africa	24.1	25.4	25.5	26.4	27.6
Middle East	35.4	47.6	49.2	46.7	48.8
China	361.3	408.3	419.5	422.7	441.7
Asia (inc China)	601.3	664.5	693.7	699.2	723.5
World	1,124.6	1,208.5	1,244.9	1,182.4	1,172.4
<i>% increase (Y-o-Y)</i>	<i>9.0</i>	<i>7.5</i>	<i>3.0</i>	<i>(5.0)</i>	<i>(0.8)</i>

Source: World Steel Association, Edelweiss research

Global Steel and Met Coal Demand

Year	U.S. Real GDP	% Δ Y/Y	Crude Steel Production (in 000s tonnes)	% Δ Y/Y	BFI Production (in 000s tonnes)	% Δ Y/Y	BFI/Crude Steel Production	Global Met Coal Production	% Δ Y/Y	Global Met Coal Production/BFI Production	Seaborne Met Market	Seaborne Met/Global Met
1970			595,000		422,450		71%					
1975	4,311		644,000		457,240		71%					
1980	5,162		715,581	11.1%	508,375	11.2%	71%	531,442		1.05x		
1981	5,292	2.5%	707,035	-1.2%	497,497	-2.1%	70%	516,663	-2.8%	1.04x		
1982	5,189	-1.9%	644,992	-8.8%	452,597	-9.0%	70%	499,450	-3.3%	1.10x		
1983	5,424	4.5%	663,398	2.9%	458,119	1.2%	69%	474,695	-5.0%	1.04x		
1984	5,814	7.2%	710,267	7.1%	461,100	0.7%	65%	505,537	6.5%	1.10x		
1985	6,054	4.1%	718,923	1.2%	474,341	2.9%	66%	509,208	0.7%	1.07x		
1986	6,264	3.5%	714,000	-0.7%	467,398	-1.5%	65%	509,892	0.1%	1.09x		
1987	6,475	3.4%	735,523	3.0%	476,815	2.0%	65%	510,645	0.1%	1.07x		
1988	6,743	4.1%	780,122	6.1%	506,706	6.3%	65%	533,305	4.4%	1.05x		
1989	6,981	3.5%	785,968	0.7%	512,738	1.2%	65%	540,497	1.3%	1.05x		
1990	7,113	1.9%	770,458	-2.0%	528,153	3.0%	69%	570,430	5.5%	1.08x		
1991	7,101	-0.2%	733,592	-4.8%	504,034	-4.6%	69%	483,134	-15.3%	0.96x		
1992	7,337	3.3%	719,680	-1.9%	498,704	-1.1%	69%	515,199	6.6%	1.03x		
1993	7,533	2.7%	727,547	1.1%	501,196	0.5%	69%	515,192	0.0%	1.03x		
1994	7,836	4.0%	725,107	-0.3%	508,506	1.5%	70%	497,859	-3.4%	0.98x		
1995	8,032	2.5%	752,271	3.7%	524,236	3.1%	70%	547,495	10.0%	1.04x		
1996	8,329	3.7%	750,090	-0.3%	517,448	-1.3%	69%	509,397	-7.0%	0.98x		
1997	8,704	4.5%	798,954	6.5%	546,646	5.6%	68%	519,920	2.1%	0.95x		
1998	9,067	4.2%	777,330	-2.7%	539,518	-1.3%	69%	490,705	-5.6%	0.91x		
1999	9,470	4.4%	784,553	0.9%	541,061	0.3%	69%	478,023	-2.6%	0.88x		
2000	9,817	3.7%	847,671	8.0%	576,276	6.5%	68%	481,232	0.7%	0.84x		
2001	9,891	0.8%	850,266	0.3%	578,475	0.4%	68%	475,136	-1.3%	0.82x		
2002	10,049	1.6%	903,929	6.3%	611,088	5.6%	68%	485,117	2.1%	0.79x	173,500	36%
2003	10,301	2.5%	969,743	7.3%	670,103	9.7%	69%	523,576	7.9%	0.78x	190,500	36%
2004	10,676	3.6%	1,068,691	10.2%	724,092	8.1%	68%	592,412	13.1%	0.82x		
2005	10,990	2.9%	1,146,203	7.3%	800,787	10.6%	70%	652,493	10.1%	0.81x		
2006	11,295	2.8%	1,249,997	9.1%	881,130	10.0%	70%	717,149	9.9%	0.81x	204,600	29%
2007	11,524	2.0%	1,344,265	7.5%	946,324	7.4%	70%	769,415	7.3%	0.81x	226,700	29%
2008E			1,319,357	-1.9%	923,550	-2.4%	70%	748,075	-2.8%	0.81x	224,423	30%
2009E			1,200,615	-9.0%	840,430	-9.0%	70%	680,749	-9.0%	0.81x	204,225	30%
Max		7.2%		10.2%		10.6%			13.1%			
Min		-1.9%		-8.8%		-9.0%			-15.3%			
Median		3.4%		1.2%		1.5%			0.7%			
Average		3.0%		2.5%		2.4%			1.6%			

Source: IISI, Bloomberg and Simmons & Company International estimates.

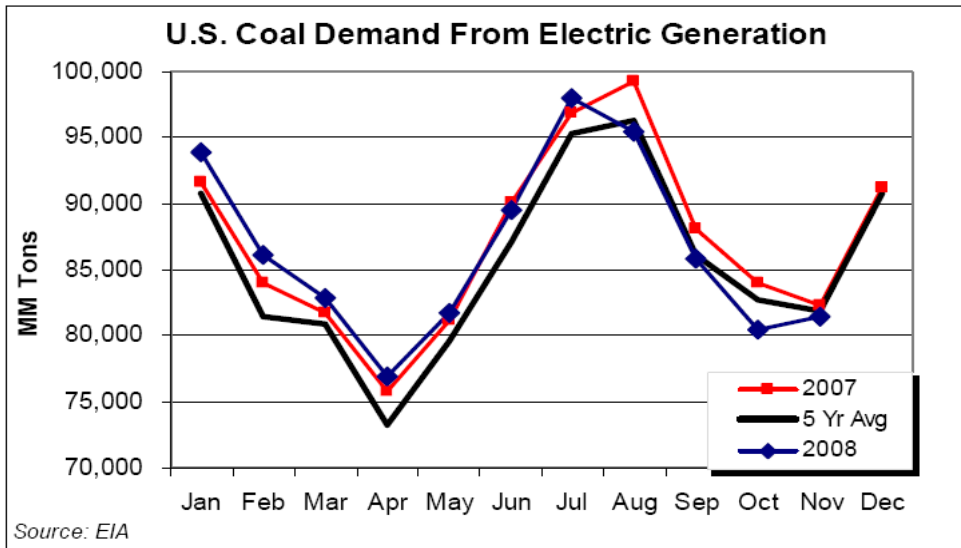
U.S. GDP/Electricity Production/Coal Demand

Date	Real GDP	% Y/Y Change	Total Electricity Production (MM kwhs)	% Y/Y Change	Total Coal Electricity Production	% Y/Y Change	Total Coal Consumption (MM tons)	% Y/Y Change
12/31/1973	4,341.5	5.76%	1,860,710		847,651		389,212	
12/31/1974	4,319.6	-0.50%	1,867,140	0.35%	828,433	-2.27%	391,811	0.67%
12/31/1975	4,311.2	-0.19%	1,917,649	2.71%	852,786	2.94%	405,962	3.61%
12/31/1976	4,540.9	5.33%	2,037,696	6.26%	944,391	10.74%	448,371	10.45%
12/31/1977	4,750.5	4.62%	2,124,323	4.25%	985,219	4.32%	477,126	6.41%
12/31/1978	5,015.0	5.57%	2,206,331	3.86%	975,742	-0.96%	481,235	0.86%
12/31/1979	5,173.4	3.16%	2,247,372	1.86%	1,075,037	10.18%	527,051	9.52%
12/31/1980	5,161.7	-0.23%	2,286,439	1.74%	1,161,562	8.05%	569,274	8.01%
12/31/1981	5,291.7	2.52%	2,294,812	0.37%	1,203,203	3.58%	596,797	4.83%
12/31/1982	5,189.3	-1.94%	2,241,211	-2.34%	1,192,004	-0.93%	593,666	-0.52%
12/31/1983	5,423.8	4.52%	2,310,285	3.08%	1,259,424	5.66%	625,211	5.31%
12/31/1984	5,813.6	7.19%	2,416,304	4.59%	1,341,681	6.53%	664,399	6.27%
12/31/1985	6,053.7	4.13%	2,469,841	2.22%	1,402,128	4.51%	693,841	4.43%
12/31/1986	6,263.6	3.47%	2,487,310	0.71%	1,385,831	-1.16%	685,056	-1.27%
12/31/1987	6,475.1	3.38%	2,572,127	3.41%	1,463,781	5.62%	717,894	4.79%
12/31/1988	6,742.7	4.13%	2,704,250	5.14%	1,540,653	5.25%	758,372	5.64%
12/31/1989	6,981.4	3.54%	2,848,227	5.32%	1,562,366	1.41%	772,190	1.82%
12/31/1990	7,112.5	1.88%	2,901,322	1.86%	1,572,109	0.62%	782,567	1.34%
12/31/1991	7,100.5	-0.17%	2,935,561	1.18%	1,568,846	-0.21%	783,874	0.17%
12/31/1992	7,336.6	3.33%	2,934,374	-0.04%	1,597,714	1.84%	795,094	1.43%
12/31/1993	7,532.7	2.67%	3,043,897	3.73%	1,665,464	4.24%	831,645	4.60%
12/31/1994	7,835.5	4.02%	3,088,725	1.47%	1,666,276	0.05%	838,354	0.81%
12/31/1995	8,031.7	2.50%	3,194,230	3.42%	1,686,056	1.19%	850,230	1.42%
12/31/1996	8,328.9	3.70%	3,284,141	2.81%	1,771,973	5.10%	896,921	5.49%
12/31/1997	8,703.5	4.50%	3,329,375	1.38%	1,820,762	2.75%	921,364	2.73%
12/31/1998	9,066.9	4.18%	3,457,416	3.85%	1,850,193	1.62%	936,619	1.66%
12/31/1999	9,470.3	4.45%	3,529,982	2.10%	1,858,618	0.46%	940,922	0.46%
12/31/2000	9,817.0	3.66%	3,637,529	3.05%	1,943,111	4.55%	985,821	4.77%
12/31/2001	9,890.7	0.75%	3,580,053	-1.58%	1,882,826	-3.10%	964,433	-2.17%
12/31/2002	10,048.8	1.60%	3,698,458	3.31%	1,910,613	1.48%	977,507	1.36%
12/31/2003	10,301.0	2.51%	3,721,159	0.61%	1,952,714	2.20%	1,005,116	2.82%
12/31/2004	10,675.8	3.64%	3,808,360	2.34%	1,957,194	0.23%	1,016,268	1.11%
12/31/2005	10,989.5	2.94%	3,902,192	2.46%	1,992,060	1.78%	1,037,485	2.09%
12/31/2006	11,294.8	2.78%	3,908,077	0.15%	1,969,776	-1.12%	1,026,636	-1.05%
12/31/2007	11,523.9	2.03%	4,006,482	2.52%	2,002,141	1.64%	1,046,424	1.93%
3 YR CAGR	2.58%		1.70%		0.76%		0.98%	
5 YR CAGR	2.78%		1.61%		0.94%		1.37%	
10 YR CAGR	2.85%		1.87%		0.95%		1.28%	
34 YR CAGR	2.91%		2.28%		2.56%		2.95%	
For Negative Years								
Average		-0.61%		-1.32%		-1.39%		-1.25%
Median		-0.23%		-1.58%		-1.12%		-1.16%
Max		-0.17%		-0.04%		-0.21%		-0.52%
Min		-1.94%		-2.34%		-3.10%		-2.17%

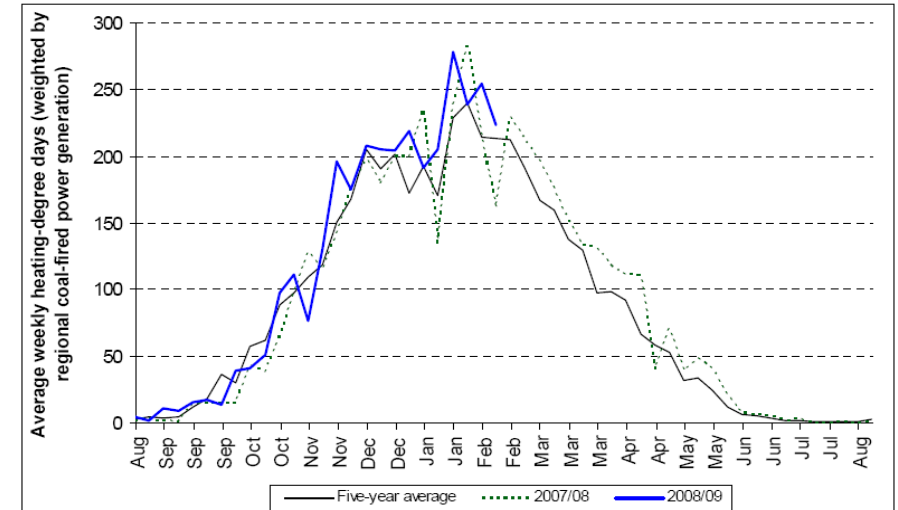
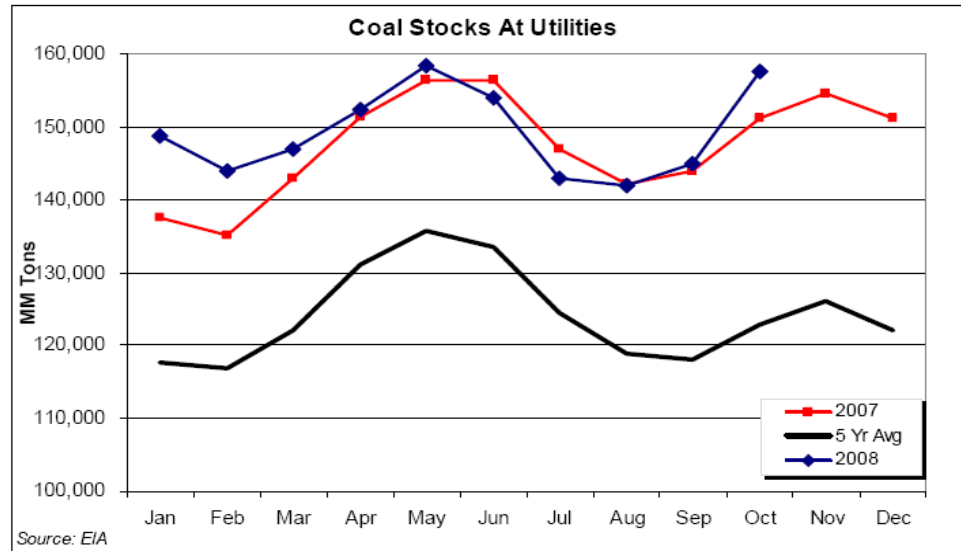
Source: Bloomberg.

US Supply / Demand Analysis

	2001	2002	2003	2004	2005	2006	2007	2008E	2009E	2010E	Change						
											2006	2007	2008E	2009E	2009E		
<u>Coal Supply:</u>																	
Appalachian	431.2	396.2	376.1	389.9	396.7	391.2	377.1	389.5	364.5	335.0	(1.4%)	(3.6%)	3.3%	(6.4%)	(8.1%)		
Interior	146.9	146.6	146.0	146.0	149.2	151.4	146.6	142.5	135.0	142.0	1.5%	(3.2%)	(2.8%)	(5.3%)	5.2%		
West	547.9	550.4	548.7	575.2	585.0	619.4	621.0	634.7	615.0	610.0	5.9%	0.3%	2.2%	(3.1%)	(0.8%)		
Imports	19.8	16.9	25.0	27.3	30.5	36.2	36.3	33.0	30.0	34.0	18.7%	0.3%	(9.1%)	(9.1%)	13.3%		
Refuse Recovery	1.8	1.0	1.0	1.0	0.7	0.8	0.8	0.8	0.8	0.8	14.3%	0.0%	0.0%	0.0%	0.0%		
Total Supply	1,147.6	1,111.1	1,096.8	1,139.4	1,162.1	1,199.0	1,181.8	1,200.5	1,145.3	1,121.8	3.2%	(1.4%)	1.6%	(4.6%)	(2.1%)		
<u>Coal Demand</u>																	
Electric Power	964.4	977.5	1,005.1	1,016.3	1,037.5	1,026.6	1,046.4	1,035.9	1,015.0	1,010.0	(1.1%)	1.9%	(1.0%)	(2.0%)	(0.5%)		
Met Coal	26.1	23.7	24.2	23.7	23.4	23.0	22.7	21.1	15.0	14.0	(1.7%)	(1.3%)	(7.0%)	(28.9%)	(6.7%)		
Other Industrial	65.3	60.7	61.3	62.2	60.3	59.5	56.5	54.2	48.0	46.0	(1.3%)	(5.0%)	(4.1%)	(11.4%)	(4.2%)		
<u>Exports:</u>																	
Steam Coal	23.3	18.1	20.9	21.2	21.3	22.1	27.0	37.5	20.0	20.0	3.8%	22.2%	38.9%	(46.7%)	0.0%		
Met Coal	25.4	21.5	22.1	26.8	28.7	27.5	32.2	42.2	20.0	22.0	(4.2%)	17.1%	31.1%	(52.6%)	10.0%		
Total Exports	48.7	39.6	43.0	48.0	50.0	49.6	59.2	79.7	40.0	42.0	(0.8%)	19.4%	34.6%	(49.8%)	5.0%		
Other Demand	4.4	4.4	4.2	5.1	4.7	3.2	3.2	3.2	3.1	3.0	(31.9%)	0.0%	0.0%	(3.1%)	(3.2%)		
Total Demand	1,108.9	1,105.9	1,137.8	1,155.3	1,175.9	1,161.9	1,188.0	1,194.1	1,121.1	1,115.0	(1.2%)	2.2%	0.5%	(6.1%)	(0.5%)		
Net Over / (Under) Supply	38.7	5.2	(41.0)	(15.9)	(13.8)	37.1	(6.2)	6.4	24.2	6.8							
CAPP Coal Price	\$29.00	\$30.00	\$39.67	\$62.25	\$57.50	\$39.65	\$55.85	\$63.92									
Yearly Change %		3.4%	32.2%	56.9%	(7.6%)	(31.0%)	40.9%	14.4%									



3. Heating degree days (excluding noncoal regions).



Coal: Proved reserves at end 2007

Million tonnes	Anthracite and bituminous	Sub-bituminous and lignite	Total	Share of Total	R/P ratio
US	112,261	130,460	242,721	28.6%	234
Canada	3,471	3,107	6,578	0.8%	95
Mexico	860	351	1,211	0.1%	99
Total North America	116,592	133,918	250,510	29.6%	224
Brazil	-	7,068	7,068	0.8%	*
Colombia	6,578	381	6,959	0.8%	97
Venezuela	479	-	479	0.1%	60
Other S. & Cent. America	172	1,598	1,770	0.2%	*
Total S. & Cent. America	7,229	9,047	16,276	1.9%	188
Bulgaria	5	1,991	1,996	0.2%	66
Czech Republic	1,673	2,828	4,501	0.5%	72
Germany	152	6,556	6,708	0.8%	33
Greece	-	3,900	3,900	0.5%	62
Hungary	199	3,103	3,302	0.4%	336
Kazakhstan	28,170	3,130	31,300	3.7%	332
Poland	6,012	1,490	7,502	0.9%	51
Romania	12	410	422	♦	12
Russian Federation	49,088	107,922	157,010	18.5%	500
Spain	200	330	530	0.1%	29
Turkey	-	1,814	1,814	0.2%	24
Ukraine	15,351	18,522	33,873	4.0%	444
United Kingdom	155	-	155	♦	9
Other Europe & Eurasia	1,025	18,208	19,233	2.3%	278
Total Europe & Eurasia	102,042	170,204	272,246	32.1%	224
South Africa	48,000	-	48,000	5.7%	178
Zimbabwe	502	-	502	0.1%	237
Other Africa	929	174	1,103	0.1%	*
Middle East	1,386	-	1,386	0.2%	*
Total Middle East & Africa	50,817	174	50,991	6.0%	186
Australia	37,100	39,500	76,600	9.0%	194
China	62,200	52,300	114,500	13.5%	45
India	52,240	4,258	56,498	6.7%	118
Indonesia	1,721	2,607	4,328	0.5%	25
Japan	355	-	355	♦	249
New Zealand	33	538	571	0.1%	124
North Korea	300	300	600	0.1%	20
Pakistan	1	1,981	1,982	0.2%	*
South Korea	-	135	135	♦	47
Thailand	-	1,354	1,354	0.2%	74
Vietnam	150	-	150	♦	4
Other Asia Pacific	115	276	391	♦	29
Total Asia Pacific	154,216	103,249	257,465	30.4%	70
TOTAL WORLD	430,896	416,592	847,488	100.0%	133
of which: European Union	8,427	21,143	29,570	3.5%	50
OECD	162,490	194,420	356,910	42.1%	168
Former Soviet Union	93,609	132,386	225,995	26.7%	463
Other EMEs	174,797	89,786	264,583	31.2%	70

Source of reserves data: Survey of Energy Resources 2007, World Energy Council.

* More than 500 years.

♦ Less than 0.05%.

Notes: Proved reserves of coal - Generally taken to be those quantities that geological and engineering information indicates with reasonable certainty can be recovered in the future from known deposits under existing economic and operating conditions.

Reserves-to-production (R/P) ratio - If the reserves remaining at the end of the year are divided by the production in that year, the result is the length of time that those remaining reserves would last if production were to continue at that rate.

Coal: Production - in Tonnes *

Million tonnes																											Change	2007	
	1981	1982	1983	1984	1985	1986	1987	1988	1989	1990	1991	1992	1993	1994	1995	1996	1997	1998	1999	2000	2001	2002	2003	2004	2005	2006	2007	2006	share
US	747.3	760.3	709.5	812.8	801.6	807.7	833.5	862.1	889.7	933.6	903.5	905.0	857.7	937.6	937.1	965.1	988.8	1013.8	998.3	974.0	1023.0	992.7	972.3	1008.9	1026.5	1054.8	1039.2	-1.3%	18.7%
Canada	40.1	42.8	44.8	57.4	60.7	57.8	61.2	70.7	70.5	68.4	71.1	65.3	69.1	72.8	75.0	75.8	78.7	75.4	72.5	69.2	70.4	66.6	62.1	66.3	67.6	66.0	69.4	6.7%	1.2%
Mexico	3.0	3.7	4.6	5.1	5.2	5.6	6.2	5.6	6.0	6.9	6.5	6.1	6.6	8.9	9.3	10.3	10.4	11.2	10.3	11.3	11.3	11.1	9.6	9.9	10.8	11.5	12.2	6.5%	0.2%
Total North America	790.5	806.8	758.9	875.2	867.6	871.1	900.9	938.3	966.2	1008.9	981.1	976.4	933.3	1019.3	1021.4	1051.2	1077.8	1100.4	1081.1	1054.5	1104.7	1070.4	1044.0	1085.1	1104.8	1132.3	1120.8	-0.8%	20.1%
Brazil	5.7	6.4	6.7	7.5	7.7	7.4	6.9	7.3	6.7	4.6	5.2	4.7	4.6	5.1	5.2	4.8	5.7	5.5	5.7	6.8	5.7	5.1	4.7	5.4	6.3	5.9	5.9	0.3%	0.1%
Colombia	4.0	4.4	5.1	6.6	9.0	10.7	14.6	15.8	19.9	20.5	21.2	23.5	21.7	22.7	25.7	30.1	32.3	33.8	32.8	38.2	43.9	39.5	50.0	53.7	60.6	67.3	71.7	6.6%	1.5%
Venezuela	^	^	^	^	^	0.1	0.2	1.1	2.1	2.2	2.4	2.5	4.0	4.4	4.4	4.2	5.3	6.5	6.6	7.9	7.7	8.1	7.0	8.1	7.2	7.5	8.0	7.7%	0.2%
Other S. & Cent. America	1.7	1.6	1.6	1.8	1.8	2.1	2.1	2.6	2.6	2.5	2.6	1.9	1.6	1.5	1.4	1.3	1.3	1.2	0.8	0.6	0.8	0.5	0.7	0.3	0.5	1.2	1.0	-20.1%	*
Total S. & Cent. America	11.4	12.4	13.4	16.0	18.5	20.3	23.8	26.8	31.3	29.8	31.3	32.6	31.9	33.8	36.7	40.4	44.6	47.0	45.8	53.6	58.0	53.3	62.4	67.4	74.5	81.8	86.6	6.0%	1.8%
Bulgaria	29.2	32.2	32.4	32.4	30.9	35.2	36.8	34.2	34.3	31.7	28.5	30.3	29.0	28.8	30.8	31.3	29.7	30.1	25.3	26.4	26.6	26.1	27.3	26.6	26.4	27.5	30.4	10.0%	0.2%
Czech Republic	117.7	118.8	123.0	124.9	122.8	123.1	122.2	119.8	114.1	102.8	96.2	86.6	85.2	77.0	74.3	73.9	73.5	67.5	59.1	65.2	66.1	63.4	63.9	62.0	62.0	62.4	62.6	-0.5%	0.8%
France	22.7	21.8	21.2	20.7	18.9	18.5	16.7	15.2	14.5	13.6	12.9	11.8	11.0	9.5	8.9	8.6	7.3	6.1	5.7	4.1	2.8	2.0	2.2	0.9	0.6	0.5	0.3	-40.0%	*
Germany	492.8	499.7	476.5	501.8	521.6	512.8	502.4	497.9	482.3	426.7	345.9	307.3	279.7	259.5	245.9	235.1	223.3	207.0	200.8	201.0	202.5	208.2	204.9	207.8	202.8	197.1	201.9	2.5%	1.6%
Greece	27.3	27.4	30.6	32.5	35.9	38.1	44.6	48.3	51.9	51.9	52.7	55.1	54.8	56.7	57.7	59.8	58.8	60.9	62.1	63.9	66.3	70.5	71.0	71.6	70.6	64.8	62.5	-3.6%	0.3%
Hungary	26.0	26.1	25.2	25.1	24.0	23.1	22.8	20.9	20.0	17.6	17.0	15.8	12.6	13.9	12.2	15.1	15.6	14.5	14.6	14.0	13.9	13.0	13.3	11.5	9.6	10.0	9.8	-1.4%	0.1%
Kazakhstan	n/a	n/a	n/a	n/a	130.8	137.5	142.1	143.1	138.4	131.4	130.0	126.5	111.9	104.6	83.4	76.8	72.6	69.8	58.4	74.9	79.1	73.7	84.9	86.9	86.6	96.2	94.4	-1.7%	1.5%
Poland	198.6	227.0	233.6	242.0	249.4	259.3	266.2	266.5	249.5	215.3	209.8	198.4	198.6	200.7	200.7	201.7	200.9	178.6	172.7	162.8	163.5	161.9	163.8	162.4	159.5	156.1	145.8	-7.0%	2.0%
Romania	36.9	37.9	44.5	44.3	46.6	47.5	51.5	58.8	61.3	38.2	32.4	38.4	39.8	40.6	41.1	41.9	33.8	26.2	22.9	29.3	33.3	30.4	33.1	31.8	31.1	34.9	35.4	1.3%	0.2%
Russian Federation	n/a	n/a	n/a	n/a	395.2	407.9	414.7	425.5	409.8	395.3	353.3	337.3	305.9	272.0	262.8	256.5	245.0	231.9	249.5	258.3	269.6	255.8	276.7	281.7	298.3	309.9	314.2	2.1%	4.7%
Spain	35.6	39.6	40.0	40.0	39.8	38.3	34.6	31.9	36.5	36.0	33.9	33.3	31.8	29.5	28.5	27.4	26.5	26.1	24.3	23.5	22.7	22.0	20.5	20.5	19.4	19.2	18.2	-4.0%	0.2%
Turkey	21.0	21.8	23.8	30.0	40.0	46.4	47.0	39.2	52.2	47.4	46.1	51.4	48.6	54.4	55.1	56.4	59.9	67.4	67.0	66.6	67.7	54.4	49.3	49.9	61.7	64.9	76.6	17.7%	0.5%
Ukraine	n/a	n/a	n/a	n/a	189.0	193.1	191.9	191.7	180.2	164.9	135.6	133.6	115.7	94.4	83.8	70.5	76.9	77.2	81.7	81.0	83.9	82.5	80.2	81.3	78.8	80.2	76.3	-4.9%	1.3%
United Kingdom	127.5	124.7	119.3	51.2	94.1	108.1	104.5	104.1	99.8	92.8	94.2	84.5	68.2	49.0	53.0	50.2	48.5	41.2	37.1	31.2	31.9	30.0	28.3	25.1	20.5	18.5	17.0	-8.1%	0.3%
Other Europe & Eurasia	781.3	795.7	794.1	793.5	100.5	101.3	100.1	98.0	99.8	101.7	87.9	82.3	75.0	60.4	62.2	59.4	69.5	73.8	58.4	62.8	62.1	64.9	66.4	65.3	64.1	66.4	68.8	8.3%	0.5%
Total Europe & Eurasia	1916.7	1972.6	1964.2	1938.2	2039.6	2090.3	2098.1	2095.0	2044.5	1867.2	1676.4	1592.6	1467.7	1350.9	1300.5	1264.4	1242.0	1178.2	1139.5	1164.8	1192.0	1158.7	1185.9	1185.2	1192.0	1208.6	1214.2	-0.2%	14.2%
Total Middle East	0.7	0.8	0.8	1.2	1.3	1.3	1.2	1.3	1.2	1.3	1.0	1.0	1.0	1.3	1.1	1.2	0.9	1.0	1.1	1.0	0.8	0.6	1.0	1.1	1.1	0.8	0.8	-	*
South Africa	130.4	144.2	145.6	162.9	173.5	176.7	176.6	181.4	176.3	174.8	178.4	174.4	182.3	195.8	206.2	206.3	219.9	224.8	222.3	224.1	223.7	220.2	237.9	243.4	244.4	256.8	269.4	4.9%	4.8%
Zimbabwe	2.9	2.8	3.3	3.1	3.1	4.1	4.8	5.1	5.1	5.5	5.6	5.6	5.3	5.5	5.5	5.2	5.3	5.5	5.0	4.4	4.5	3.9	2.8	3.8	2.9	2.1	2.1	0.5%	*
Other Africa	2.6	2.2	2.1	2.3	2.4	2.4	2.3	2.4	2.2	2.3	2.4	2.4	2.2	2.3	2.3	2.1	2.0	2.3	2.2	2.0	2.0	2.1	2.0	2.0	1.8	1.7	1.7	-	*
Total Africa	135.9	149.2	151.0	168.3	179.0	183.2	183.7	188.8	183.6	182.6	186.4	182.3	189.8	203.6	214.1	213.6	227.2	232.6	229.5	230.6	230.2	226.3	242.7	249.2	249.0	260.6	273.2	4.8%	4.9%
Australia	126.9	130.1	133.7	140.0	166.6	178.0	188.1	187.5	201.9	210.4	218.4	229.1	228.7	233.6	245.3	256.1	279.7	288.0	303.0	310.9	333.2	342.0	351.5	366.1	378.8	385.3	393.9	2.1%	6.9%
China	616.5	666.3	714.5	789.2	872.3	894.0	928.0	979.9	1054.2	1079.9	1087.4	1116.4	1150.7	1239.9	1360.7	1396.7	1372.8	1250.0	1280.0	1299.2	1381.5	1454.6	1722.0	1992.3	2204.7	2373.0	2536.7	7.0%	41.1%
India	130.1	135.0	142.9	152.5	157.5	169.2	185.4	197.0	215.3	223.3	239.9	253.8	263.2	270.9	289.0	311.0	319.4	320.9	314.4	334.8	341.9	358.1	375.4	407.7	428.4	449.2	478.2	6.3%	5.8%
Indonesia	0.4	0.6	0.7	1.5	2.0	2.6	3.0	4.5	8.7	10.7	13.8	22.4	27.6	32.9	41.8	50.4	54.8	62.2	73.7	77.0	91.9	103.4	113.0	129.2	152.7	181.1	174.8	-3.4%	3.4%
Japan	17.7	17.6	17.1	16.7	16.4	16.0	13.1	11.2	10.2	8.3	8.1	7.6	7.2	6.9	6.3	6.5	4.3	3.7	3.9	3.1	3.2	1.4	1.3	1.3	1.1	1.4	1.4	4.7%	*
New Zealand	2.2	2.2	2.5	2.6	2.4	2.5	2.4	2.4	2.7	2.6	2.7	3.0	3.1	3.0	3.5	3.6	3.4	3.3	3.5	3.6	3.9	4.5	5.2	5.2	5.3	5.8	4.6	-20.9%	0.1%
Pakistan	1.6	1.8	1.8	2.3	2.2	2.1	2.4	2.7	2.7	2.8	2.8	3.0	3.2	3.0	3.2	3.5	3.1	3.3	3.3	3.2	3.3	3.5	3.3	3.3	3.5	3.9	3.6	-7.2%	0.1%
South Korea	19.9	20.1	19.9	21.4	22.5	24.3	24.3	24.3	20.8	17.2	15.1	12.0	9.4	7.4	5.7	5.0	4.5	4.4	4.2	4.2	3.8	3.3	3.3	3.2	2.8	2.8	2.9	2.3%	*
Thailand	1.7	2.1	2.0	2.4	5.2	5.5	6.9	7.3	8.9	12.4	14.7	15.4	15.6	17.1	18.4	21.5	23.4	20.2	18.3	17.7	19.6	19.6	18.8	20.1	20.9	19.0	18.3	-3.9%	0.2%
Vietnam	6.0	6.3	6.3	5.0	5.6	6.1	6.3	6.1	5.1	5.1	5.2	5.2	6.5	6.0	6.9	8.8	11.3	11.4	8.8	11.6	13.4	16.4	19.3	26.3	32.6	38.9	41.2	5.9%	0.7%
Other Asia Pacific	52.8	56.0	56.9	58.6	61.8	61.9	61.4	61.2	60.0	56.2	54.4	47.4	43.7	40.5	38.0	34.2	33.5	30.9	34.3	36.7	37.6	36.4	37.5	40.4	43.4	42.6	44.3	3.3%	0.

Coal: Production - in Tonnes Oil Equivalent (MTOE)*

Million tonnes oil equivalent	1981	1982	1983	1984	1985	1986	1987	1988	1989	1990	1991	1992	1993	1994	1995	1996	1997	1998	1999	2000	2001	2002	2003	2004	2005	2006	2007	Change 2007 over 2006	2007 share of total	
US	463.1	469.7	434.6	496.9	487.0	491.6	507.5	522.6	537.9	565.9	544.2	545.0	510.3	557.2	555.1	571.6	584.9	603.2	584.3	570.1	590.3	570.1	553.6	572.4	580.2	595.1	587.2	-1.3%	18.7%	
Canada	22.3	23.6	24.2	31.7	33.7	32.1	31.6	36.6	38.9	37.9	39.7	35.1	37.5	39.4	40.8	41.6	43.0	40.8	39.2	37.1	37.6	34.9	32.2	34.7	35.6	34.5	36.9	6.7%	1.2%	
Mexico	1.7	2.0	2.6	2.8	2.9	3.1	3.5	3.1	3.3	3.4	3.1	2.9	3.1	4.2	4.1	4.6	4.5	4.8	4.9	5.4	5.3	5.3	4.6	4.7	5.2	5.5	5.9	6.5%	0.2%	
Total North America	487.1	495.3	461.4	531.4	523.6	526.9	542.7	562.3	580.2	607.2	587.0	583.0	550.9	600.8	600.1	617.7	632.5	648.8	628.3	612.6	633.2	610.2	590.4	611.8	620.9	635.2	629.9	-0.8%	20.1%	
Brazil	2.6	2.9	3.0	3.4	3.5	3.3	3.0	3.2	2.8	1.9	2.1	1.8	1.8	2.0	2.0	1.8	2.1	2.0	2.1	2.9	2.1	1.9	1.8	2.0	2.4	2.2	2.2	0.3%	0.1%	
Colombia	2.6	2.9	3.3	4.3	5.8	7.0	9.5	10.3	12.9	13.3	13.8	15.3	14.1	14.7	16.7	19.5	21.0	21.9	21.3	24.9	28.5	25.7	32.5	34.9	39.4	43.7	46.6	6.6%	1.5%	
Venezuela	^	^	^	^	^	^	0.2	0.8	1.5	1.6	1.8	1.8	2.9	3.2	3.2	3.1	3.9	4.7	4.8	5.8	5.6	5.9	5.1	5.9	5.3	5.4	5.9	7.7%	0.2%	
Other S. & Cent. America	1.1	1.0	1.0	1.2	1.2	1.4	1.4	1.7	1.7	1.7	1.7	1.3	1.1	1.0	0.9	0.9	0.9	0.8	0.5	0.4	0.5	0.4	0.5	0.2	0.3	0.8	0.6	-20.1%	*	
Total S. & Cent. America	6.3	6.8	7.4	9.0	10.5	11.7	14.0	16.0	19.0	18.5	19.3	20.2	19.9	21.0	22.8	25.3	27.9	29.5	28.7	33.9	36.8	33.9	39.9	43.0	47.3	52.2	55.3	6.0%	1.8%	
Bulgaria	5.0	5.5	5.5	5.5	5.3	6.0	6.3	5.8	5.8	5.4	4.8	5.1	4.9	4.8	5.2	5.2	4.9	5.0	4.2	4.4	4.4	4.4	4.6	4.5	4.4	4.6	5.1	10.0%	0.2%	
Czech Republic	42.7	43.1	43.8	44.5	43.9	43.8	43.6	42.5	40.7	36.7	33.9	31.4	30.8	28.1	27.3	27.0	27.9	26.0	23.1	25.0	25.4	24.3	24.2	23.5	23.5	23.7	23.6	-0.5%	0.8%	
France	12.6	12.2	11.6	11.5	10.2	10.2	10.1	9.2	8.7	8.1	7.7	7.1	6.6	5.7	5.3	5.2	4.3	3.6	3.3	2.3	1.5	1.1	1.3	0.4	0.2	0.2	0.1	-40.0%	*	
Germany	146.3	146.5	137.8	139.6	144.8	139.6	135.3	134.3	128.4	117.3	102.0	93.3	83.7	77.8	74.6	70.0	66.9	61.3	59.4	56.5	54.1	55.0	54.1	54.7	53.2	50.3	51.5	2.5%	1.6%	
Greece	3.5	3.6	4.0	4.3	4.8	5.1	6.0	6.3	7.1	7.1	6.9	7.0	7.2	7.4	7.5	7.2	7.7	8.1	8.0	8.2	8.5	9.1	9.5	9.6	9.4	8.6	8.2	-3.6%	0.3%	
Hungary	5.9	6.0	5.8	5.7	5.5	5.3	5.2	4.8	4.6	4.0	3.9	3.6	2.8	2.9	2.6	3.2	3.3	3.0	3.1	2.9	2.9	2.9	2.7	2.8	2.4	2.0	2.1	2.0	-1.4%	0.1%
Kazakhstan	n/a	n/a	n/a	n/a	68.0	72.2	73.9	74.0	71.4	67.7	66.9	65.0	57.3	53.5	42.6	39.3	37.3	36.0	30.0	38.5	40.7	37.8	43.3	44.4	44.2	49.1	48.3	-1.7%	1.5%	
Poland	98.1	112.8	115.4	117.4	118.0	119.4	120.8	120.7	111.1	94.5	90.7	89.2	89.2	89.3	91.1	94.5	92.1	79.6	77.0	71.3	71.7	71.3	71.4	70.5	68.7	67.0	62.3	-7.0%	2.0%	
Romania	8.5	8.4	9.7	9.8	10.3	10.5	11.3	12.6	12.4	8.7	7.4	8.5	8.9	9.1	9.3	9.6	7.4	5.7	5.1	6.4	7.1	6.6	7.0	6.7	6.6	7.3	7.4	1.3%	0.2%	
Russian Federation	n/a	n/a	n/a	n/a	176.2	183.0	184.4	189.0	183.1	176.2	154.8	148.4	135.1	121.2	118.5	114.2	109.3	103.9	112.1	116.0	122.6	117.3	127.1	131.7	139.2	145.1	148.2	2.1%	4.7%	
Spain	11.8	13.0	13.2	13.4	13.4	13.4	11.8	11.0	11.9	11.9	11.2	11.4	11.0	10.6	10.2	10.0	9.8	9.3	8.6	8.0	7.6	7.2	6.8	6.7	6.4	6.2	6.0	-4.0%	0.2%	
Turkey	6.9	7.2	7.5	8.8	10.7	11.5	12.3	11.3	12.8	12.1	11.8	12.1	11.7	12.1	12.1	12.3	13.1	13.9	13.3	13.9	14.2	11.5	10.5	10.5	12.8	13.4	15.8	17.7%	0.5%	
Ukraine	n/a	n/a	n/a	n/a	96.5	99.6	98.0	97.8	91.7	83.9	69.1	68.4	59.4	48.6	43.2	36.4	39.9	39.9	42.3	42.0	43.5	42.8	41.7	42.2	40.9	41.7	39.6	-4.9%	1.3%	
United Kingdom	75.7	73.8	70.5	29.8	54.9	63.6	61.3	61.4	59.1	54.7	55.8	50.0	40.3	28.3	31.8	30.2	29.4	25.0	22.5	19.0	19.4	18.2	17.2	15.3	12.5	11.3	10.4	-8.1%	0.3%	
Other Europe & Eurasia	369.0	372.5	368.2	363.0	28.1	28.2	26.6	24.6	24.7	24.8	21.3	19.3	17.4	13.9	14.1	13.4	15.9	16.7	13.4	14.0	14.4	15.3	15.8	15.6	14.7	15.6	16.9	8.3%	0.5%	
Total Europe & Eurasia	785.9	804.5	793.0	753.3	790.5	811.2	806.8	805.3	773.5	713.1	648.1	620.0	566.2	513.4	495.3	477.5	469.2	437.0	425.3	428.6	438.2	424.6	437.2	438.7	438.7	446.1	445.4	-0.2%	14.2%	
Total Middle East	0.4	0.5	0.5	0.8	0.8	0.8	0.8	0.8	0.7	0.8	0.6	0.6	0.6	0.8	0.7	0.7	0.6	0.6	0.7	0.6	0.5	0.4	0.6	0.6	0.6	0.5	0.5	-	*	
South Africa	74.9	82.8	83.7	93.7	99.8	101.7	101.4	104.2	101.1	100.1	102.2	100.0	103.5	111.1	116.9	116.9	124.6	127.1	125.6	126.6	126.1	124.1	134.1	137.2	137.7	144.7	151.8	4.9%	4.8%	
Zimbabwe	1.9	1.8	2.1	2.0	2.0	2.6	3.1	3.3	3.3	3.5	3.6	3.6	3.4	3.5	3.6	3.3	3.4	3.5	3.2	2.8	2.9	2.5	1.8	2.4	1.9	1.4	1.4	0.5%	*	
Other Africa	1.6	1.3	1.2	1.4	1.4	1.4	1.4	1.4	1.3	1.4	1.4	1.4	1.3	1.4	1.4	1.3	1.2	1.4	1.3	1.2	1.2	1.3	1.2	1.2	1.1	1.1	1.1	-	*	
Total Africa	78.3	85.9	87.1	97.1	103.1	105.8	105.9	108.9	105.7	105.1	107.2	105.0	108.3	116.0	121.9	121.5	129.2	132.0	130.1	130.7	130.2	128.0	137.1	140.9	140.7	147.1	154.2	4.8%	4.9%	
Australia	65.1	66.5	69.5	73.0	88.3	93.4	97.8	96.0	104.6	109.0	113.4	120.0	121.1	123.3	129.4	133.9	148.3	149.8	160.8	166.3	179.9	184.5	190.1	198.8	206.5	211.0	215.4	2.1%	6.9%	
China	309.9	336.1	359.9	397.6	439.8	450.1	466.8	492.8	530.2	542.6	546.7	560.9	580.4	624.7	686.3	703.2	690.0	628.7	645.9	656.7	697.6	733.7	868.4	1012.1	1119.8	1205.1	1289.6	7.0%	41.1%	
India	62.9	62.3	65.9	69.2	71.4	76.8	84.2	89.5	97.4	91.9	98.6	104.4	108.2	109.8	117.7	126.7	126.3	126.5	124.4	132.2	133.6	138.5	144.4	155.7	162.1	170.2	181.0	6.3%	5.8%	
Indonesia	0.2	0.4	0.4	0.9	1.2	1.6	1.9	2.8	5.4	6.6	8.5	13.8	17.0	20.2	25.7	31.0	33.7	38.3	45.3	47.4	56.5	63.6	69.5	79.4	93.9	111.4	107.5	-3.4%	3.4%	
Japan	11.1	10.9	10.2	9.9	9.6	9.4	7.5	6.4	5.8	4.6	4.4	4.2	4.0	3.8	3.4	3.6	2.4	2.0	2.2	1.7	1.8	0.8	0.7	0.7	0.6	0.7	0.8	4.7%	*	
New Zealand	1.2	1.2	1.3	1.4	1.3	1.3	1.3	1.3	1.5	1.5	1.5	1.7	1.8	1.8	2.1	2.2	2.0	2.0	2.1	2.2	2.4	2.7	3.2	3.2	3.2	3.5	2.8	-20.9%	0.1%	
Pakistan	0.7	0.8	0.8	1.0	1.0	0.9	1.1	1.2	1.2	1.3	1.3	1.3	1.4	1.4	1.4	1.5	1.4	1.5	1.5	1.4	1.5	1.6	1.5	1.5	1.6	1.7	1.6	-7.2%	0.1%	
South Korea	9.1	9.3	9.1	9.8	10.4	11.2	11.2	10.9	9.4	7.7	6.8	5.4	4.2	3.3	2.6	2.2	2.0	2.0	1.9	1.9	1.7	1.5	1.5	1.4	1.3	1.3	1.3	2.3%	*	
Thailand	0.5	0.6	0.6	0.7	1.4	1.5	1.9	2.0	2.6	3.6	4.2	4.4	4.6	5.2	5.5	6.3	6.9	6.1	5.7	5.1	5.6	5.7	5.3	5.6	5.8	5.3	5.1	-3.9%	0.2%	
Vietnam	3.4	3.5	3.5	2.8	3.1	3.4	3.5	3.4	2.9	2.9	2.9	2.9	3.6	3.4	3.9	4.9	6.4	6.4	4.9	6.5	7.5	9.2	10.8	14.7	18.3	21.8	23.1	5.9%	0.7%	
Other Asia Pacific	28.8	30.4	30.8	31.6	33.0	32.7	32.2	31.7	31.1	29.3	28.4	25.3	23.2	21.6	20.2	17.9	17.2	15.7	18.0	19.3	19.7	19.0	19.6	20.8	22.1	21.4	22.1	3.3%	0.7%	
Total Asia Pacific	492.8	521.9	552.1	597.9	660.5	682.3	709.3	738.1	791.9	800.8	816.8	844.2	869.4	918.4	998.3	1033.5	1036.5	978.9	1012.8	1040.8	1107.8	1160.7	1315.0	1494.0	1635.2	1753.4	1850.2	5.5%		

